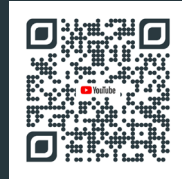


BENEFITS : Epsivol is highly modular

- Compatible with 9 types of beams and 3 types of shelves
- Possibility to pre-assemble frames at the factory : 60% saving on assembly time
- Can be installed on multi-tier installations
- Beams compatible with the Epsirack pallet rack
- Other versions available : reduced size maximum height 3 meters (Epsivol One), work table (Epsitable), vertical storage (Epsivol vertical), secure storage (Epsivol secure mesh)
- Standard default colour, other colours on request



Product video

FRAMES TECHNICAL CHARACTERISTICS :

- Epoxy Paint
- Standard finish RAL 7024 or galvanized for Epsivol One
- Uprights : 50x50x1,5 mm with a double front perforation every 50 mm
- Galvanized crossbars and diagonals profile « C » 25x15 mm
- Galvanized footplates 100x60x2 mm
- Height : from 1750 to 8500 mm by multiples of 250 mm
- Depth : from 400 to 1200 mm
- Up to 1500 kg per level, 4500 kg per bay

BEAMS TECHNICAL CHARACTERISTICS :

- Epoxy Paint
- Standard finish RAL 7035
- Connectors : 3 fixings
- Safety pins
- Support beams : Depth 400 to 1200 mm mandatory for length > 2500 mm and depth > 800 mm
- Length : from 1000 to 3000 mm according to the beam type

BEAM TYPES :

- 1 Rectangular with 3 sections : 50x30, 60x30, 80x40 mm
- Step beam : 45x36, 65x36, 85x36 mm to fix shelves
- 2 Perforated 65x36 mm to integrate separators
- « Z » profile 107x36 mm to integrate chipboard
- 3 Oval shape hanger beams 40x20 mm to hang clothes
- 4 Angled tyre beams 70x43 mm suiting the tire shape

Usable length = beam length

Overall upright length =

For the starting bay : beam length + 100 mm

For the extension bay : beam length + 50 mm

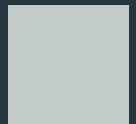
Overall footplate length =

For the starting bay : beam length + 160 mm

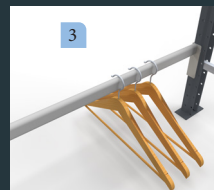
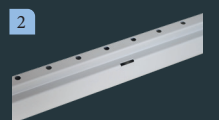
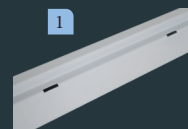
For the extension bay : beam length + 50 mm



RAL 7024



RAL 7035



MAXIMUM PERMISSIBLE LOAD CAPACITIES PER PAIR OF BEAMS

LENGTH (MM)	1000	1250	1500	1800	2000	2250	2500	2700	3000
50x30	1004 kg	802 kg	556 kg	386 kg	312 kg	246 kg	200 kg	170 kg	138 kg
60x30	1500 kg	1354 kg	1078 kg	748 kg	606 kg	478 kg	388 kg	332 kg	268 kg
80x40	1500 kg	1500 kg	1500 kg	1500 kg	1500 kg	1188 kg	962 kg	826 kg	668 kg
Hanger beam 40x20	424 kg	326 kg	226 kg	156 kg	126 kg	100 kg			
Step 45x36	630 kg	533 kg	465 kg	384 kg	324 kg				
Step 65x36	1100 kg	974 kg	792 kg	683 kg	633 kg	565 kg	470 kg		
Step 85x36	1500 kg	1500 kg	1500 kg	1500 kg	1409 kg	1146 kg	948 kg	832 kg	689 kg
«Z» 107x36	1500 kg	1500 kg	1500 kg	1500 kg	1500 kg	1376 kg	1252 kg	1130 kg	934 kg
Tyre beam 70x43	450 kg	300 kg	300 kg	240 kg	210 kg	180 kg			
Perforated step 65x36	880 kg	731 kg	633 kg	546 kg	506 kg	452 kg	376 kg		

SHELVES TYPES :

- Chipboard 19 mm, 2 sided uncoated, or white melaminated
- Galvanised steel sheet thickness 0,5 mm (modules of 99 and 124 mm)
- Electro zinc wire shelf diameter 0,5 mm, mesh 50 x 100 mm



ACCESSORIES :

- Raw spacer
- Galvanized stops for shelves
- 1 Vertical dividers : tubes, wire or steel sheet
- Divider arms
- Horizontal dividers
- 2 Perforated steel sheets or mesh sides
- 3 Car mats / wardrobe supports
- 4 Tyre dividers
- 5 Front trims
- 6 Upright protectors and frame side guards
- 7 Exhaust support beams
- Mesh doors



YOUR DISTRIBUTOR :

